

PREMESCOLATORI A SPOSTAMENTO DI LIQUIDO VERTICALI CERTIFICATI UL UL LISTED VERTICAL FOAM BLADDER TANKS



Caratteristiche tecniche costruttive

- **Norma costruttiva:** ASME VIII Div.1
- **Pressione di progetto std.:** 12 bar
- **Pressione max. di esercizio std.:** 12 bar
- **Pressione di prova std.:** 18 bar
- **Temperatura di progetto:** -10° + 50°C
- **Su richiesta** i serbatoi possono essere progettati e costruiti con pressioni diverse

Technical construction data

- **Construction code:** ASME VIII Div.1
- **Design pressure std. :** 12 bar
- **Max. working pressare std.:** 12 bar
- **Test pressure std.:** 18 bar
- **Design temperature:** -10° +50°C
- **On request** the tanks can be manufactured with different pressure values

Caratteristiche tecniche costruttive

Materiali

- **Fondi e Fasciame:** ASTM A 516 GR. 70
- **Flange:** ASTM A 105/A Gr.B
- **Tubazioni:** ASTM A 106 Gr.B
- **Valvole intercetto acqua e schiuma:** ASTM A 105 con sfera in AISI 304
- **Valvole sfiato e livelli:** Ottone
- **Manometri:** AISI 304 a bagno di glicerina
- **Ugelli acqua e schiuma:** Acciaio inox
- **Membrana:** gomma rinforzata

Ciclo verniciatura certificato C3H:

- **Preparazione:** sabbiatura SA 2,5
- **Prima mano:** 2 componenti primer epossivinilico
- **Finitura:** 2 componenti poliuretano
- **Spessore finale 180 micron**

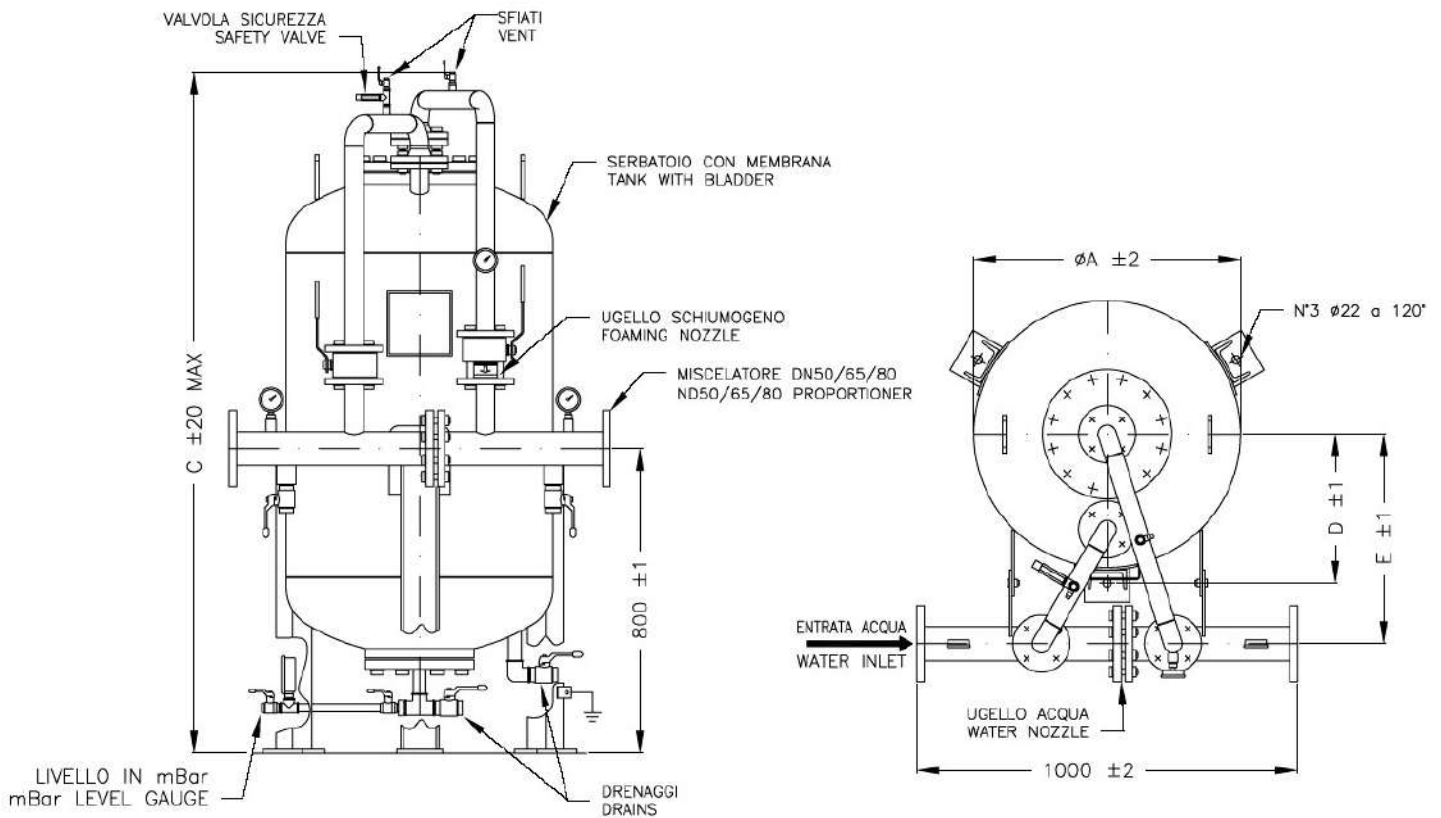
Technical construction data

Materials

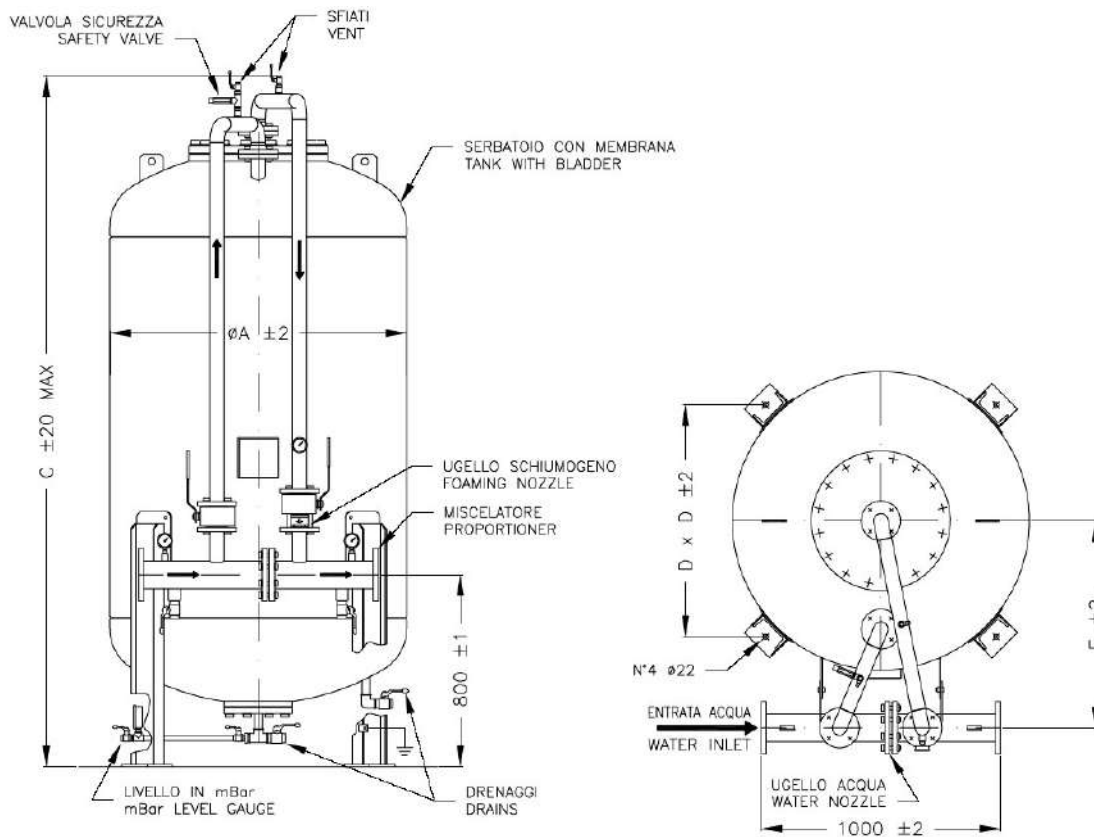
- **Heads and vessel:** ASTM A 516 GR.70
- **Flanges:** ASTM A 105/A Gr.B
- **Pipe:** ASTM A 106 Gr.B
- **Water and foam ball valve:** ASTM A 105 with ball in AISI 304
- **Drain and intercept valve:** Brass
- **Pressure gauge:** AISI 304
- **Water and foam nozzles:** St. steel
- **Bladder:** reinforced rubber

Certified painting cycle C3H:

- **Surface preparation:** sand blasting SA 2,5
- **Primer:** two component epoxy primer
- **Finish:** two component acrylic polyurethane finish
- **Tot. thickness 180 micron**



| MODELLO MODEL | MISURE - DIMENSIONS | | | | MAX. PESO VUOTO Kg. MAX. EMPTY WEIGHT Kg. | CAPACITA' NOMINALE USG NOMINAL CAPACITY USG | CAPACITA' NOMINALE Lt. NOMINAL CAPACITY Lt. |
|------------------|---------------------|------|-----|-----|--|--|--|
| | A | C | D | E | | | |
| FI-PI-UL 25 | 500 | 1363 | 291 | 450 | 220 | 25 | 95 |
| FI-PI-UL 50 | 500 | 1840 | 291 | 450 | 257 | 50 | 190 |
| FI-PI-UL 75 | 700 | 1905 | 677 | 550 | 270 | 75 | 284 |
| FI-PI-UL 100 | 700 | 1905 | 677 | 550 | 301 | 100 | 379 |



| MODELLO MODEL | MISURE – DIMENSIONS | | | | MAX. PESO VUOTO Kg. MAX. EMPTY WEIGHT Kg. | CAPACITA' NOMINALE USG NOMINAL CAPACITY USG | CAPACITA' NOMINALE Lt. NOMINAL CAPACITY Lt. |
|------------------|---------------------|------|-----|-----|--|--|--|
| | A | C | D | E | | | |
| FI-PI-UL 150 | 800 | 2045 | 624 | 650 | 429 | 150 | 568 |
| FI-PI-UL 200 | 800 | 2465 | 624 | 650 | 486 | 200 | 757 |
| FI-PI-UL 250 | 1000 | 2138 | 790 | 750 | 513 | 250 | 947 |
| FI-PI-UL 300 | 1000 | 2398 | 790 | 750 | 537 | 300 | 1136 |
| FI-PI-UL 350 | 1000 | 2638 | 790 | 750 | 560 | 350 | 1325 |
| FI-PI-UL 400 | 1000 | 2888 | 790 | 750 | 596 | 400 | 1514 |
| FI-PI-UL 450 | 1000 | 3138 | 790 | 750 | 632 | 450 | 1704 |
| FI-PI-UL 500 | 1100 | 2959 | 864 | 800 | 859 | 500 | 1893 |
| FI-PI-UL 600 | 1170 | 3089 | 914 | 800 | 927 | 600 | 2271 |
| FI-PI-UL 700 | 1270 | 3072 | 984 | 860 | 939 | 700 | 2650 |

| MODELLO MODEL | MISURE – DIMENSIONS | | | | MAX. PESO VUOTO Kg. | CAPACITA' NOMINALE USG | CAPACITA' NOMINALE Lt. |
|------------------|---------------------|------|------|------|--------------------------|------------------------------|------------------------------|
| | A | C | D | E | MAX. EMPTY WEIGHT Kg. | NOMINAL CAPACITY USG | NOMINAL CAPACITY Lt. |
| FI-PI-UL 800 | 1270 | 3372 | 984 | 860 | 1002 | 800 | 3028 |
| FI-PI-UL 900 | 1360 | 3332 | 1048 | 900 | 1085 | 900 | 3407 |
| FI-PI-UL 1000 | 1450 | 3280 | 1112 | 950 | 1263 | 1000 | 3785 |
| FI-PI-UL 1100 | 1450 | 3516 | 1112 | 950 | 1326 | 1100 | 4164 |
| FI-PI-UL 1200 | 1450 | 3750 | 1112 | 950 | 1403 | 1200 | 4542 |
| FI-PI-UL 1300 | 1600 | 3476 | 1245 | 1050 | 1532 | 1300 | 4921 |
| FI-PI-UL 1400 | 1600 | 3656 | 1245 | 1050 | 1597 | 1400 | 5299 |
| FI-PI-UL 1500 | 1600 | 3846 | 1245 | 1050 | 1661 | 1500 | 5678 |
| FI-PI-UL 1600 | 1750 | 3570 | 1351 | 1150 | 1703 | 1600 | 6056 |
| FI-PI-UL 1700 | 1750 | 3754 | 1351 | 1150 | 1744 | 1700 | 6435 |
| FI-PI-UL 1800 | 1750 | 3874 | 1351 | 1150 | 1798 | 1800 | 6813 |
| FI-PI-UL 1900 | 1750 | 4044 | 1351 | 1150 | 1864 | 1900 | 7192 |
| FI-PI-UL 2000 | 1960 | 3599 | 1534 | 1200 | 2233 | 2000 | 7570 |
| FI-PI-UL 2200 | 1960 | 3849 | 1534 | 1200 | 2357 | 2200 | 8327 |
| FI-PI-UL 2400 | 2100 | 3753 | 1636 | 1300 | 2469 | 2400 | 9084 |
| FI-PI-UL 2600 | 2100 | 3941 | 1636 | 1300 | 2554 | 2600 | 9841 |
| FI-PI-UL 2800 | 2200 | 3905 | 1707 | 1350 | 2659 | 2800 | 10598 |
| FI-PI-UL 3000 | 2200 | 4115 | 1707 | 1350 | 2778 | 3000 | 11355 |
| FI-PI-UL 3200 | 2200 | 4325 | 1707 | 1350 | 2897 | 3200 | 12112 |
| FI-PI-UL 3400 | 2200 | 4545 | 1707 | 1350 | 3016 | 3400 | 12869 |
| FI-PI-UL 3600 | 2200 | 4745 | 1707 | 1350 | 3130 | 3600 | 13626 |
| FI-PI-UL 3800 | 2200 | 4945 | 1707 | 1350 | 3243 | 3800 | 14383 |
| FI-PI-UL 4000 | 2200 | 5145 | 1707 | 1350 | 3357 | 4000 | 15140 |